

SENIOR 2000

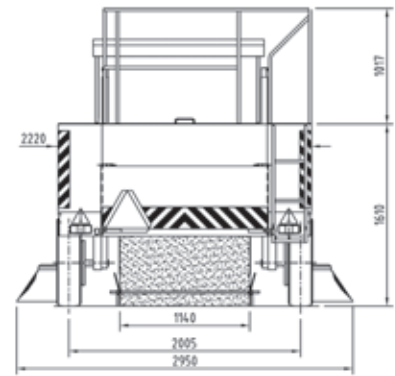
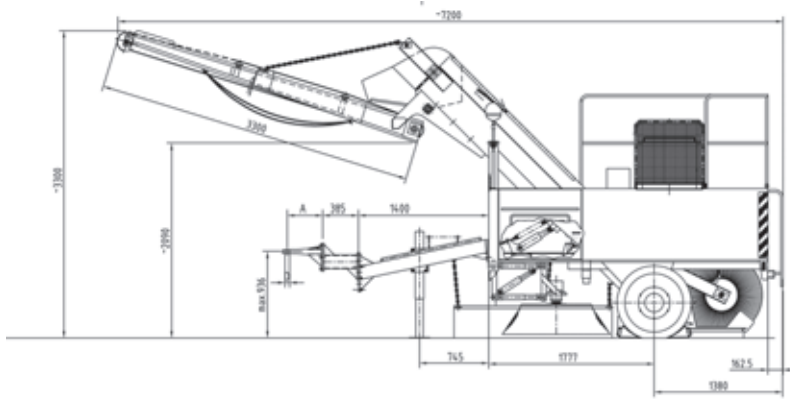
Trailer sweeping machine



Load coarse waste material quickly and direct from the street onto a truck.



A company of the Aebi Schmidt Group

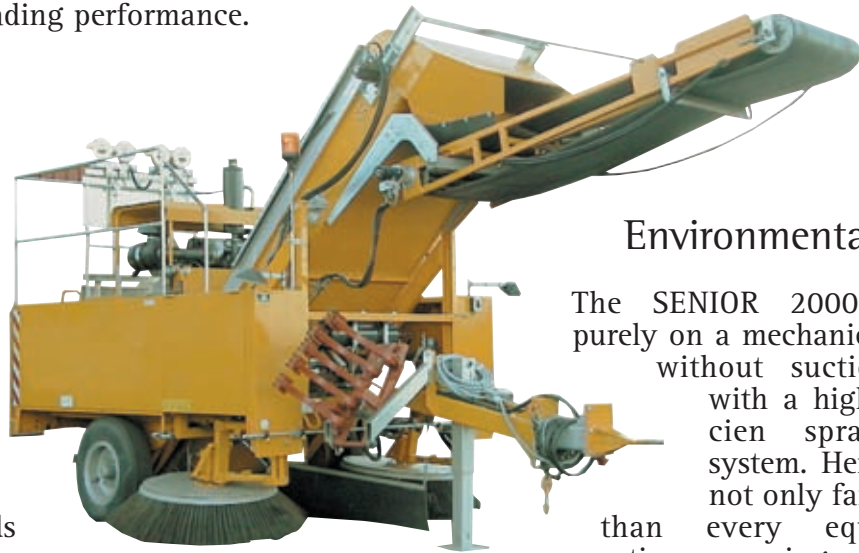


SENIOR 2000 trailer sweeping machine

The SENIOR 2000 trailer sweeping machine is ideally suited, for example, for removing the milled paving surface material prior to overlay during street maintenance, direct from the street onto the towing vehicle with a high loading performance.

The performance

With a loading volume of up to a ton of sand, gravel or other waste material per minute, the SENIOR 2000 trailer sweeping machine is superior to every other sweeper on the market in terms of the volume of the swept material. When sweeping, it can achieve speeds of up to 20 km/hour.



Environmental care

The SENIOR 2000 works purely on a mechanical basis without suction and with a highly efficient spray-water system. Hence it is not only far quieter than every equivalent suction sweeping machine, but also offers a significant reduction of dust emissions. Through the consistent further development during recent years, the SENIOR 2000 has been brought to today's level of well-engineered capacity, quality and reliability.

The conveyance of the waste material

The waste material is swept by the two rotating side brushes on to the wide sweeping brush and from there via a conveyer belt onto the loading platform of the truck. The conveyer belt can be adjusted in height and can hence be adapted to the loading height of the standard trucks used for towing.

The SENIOR 2000 trailer sweeping machine is ideally suited, for example, for removing the milled paving surface material prior to overlay during street maintenance, direct from the street onto the towing vehicle with a high loading performance.

Control

The transport speed of the conveyer belt can be controlled from the driver's cab so that the waste material can be evenly distributed across the whole of the loading area.



Technical data

Built-in motor:	Perkins 1104
Sweeping speed:	0 - 20 km/hour
Sweeping width:	2,900 mm
Water tank:	1,100 litres
Waste material volume dependent on the loading volume of the towing vehicle	
Total weight:	5,000 kg
Conveyor belt speed	infinitely adjustable

Status 04/2006 Copyright © Aebi Schmidt Holding GmbH. All rights reserved. Errors and amendments excepted.



A company of the Aebi Schmidt Group
www.schmidt-automotive.uk